

LAB MEETING

DAVID CROWLEY

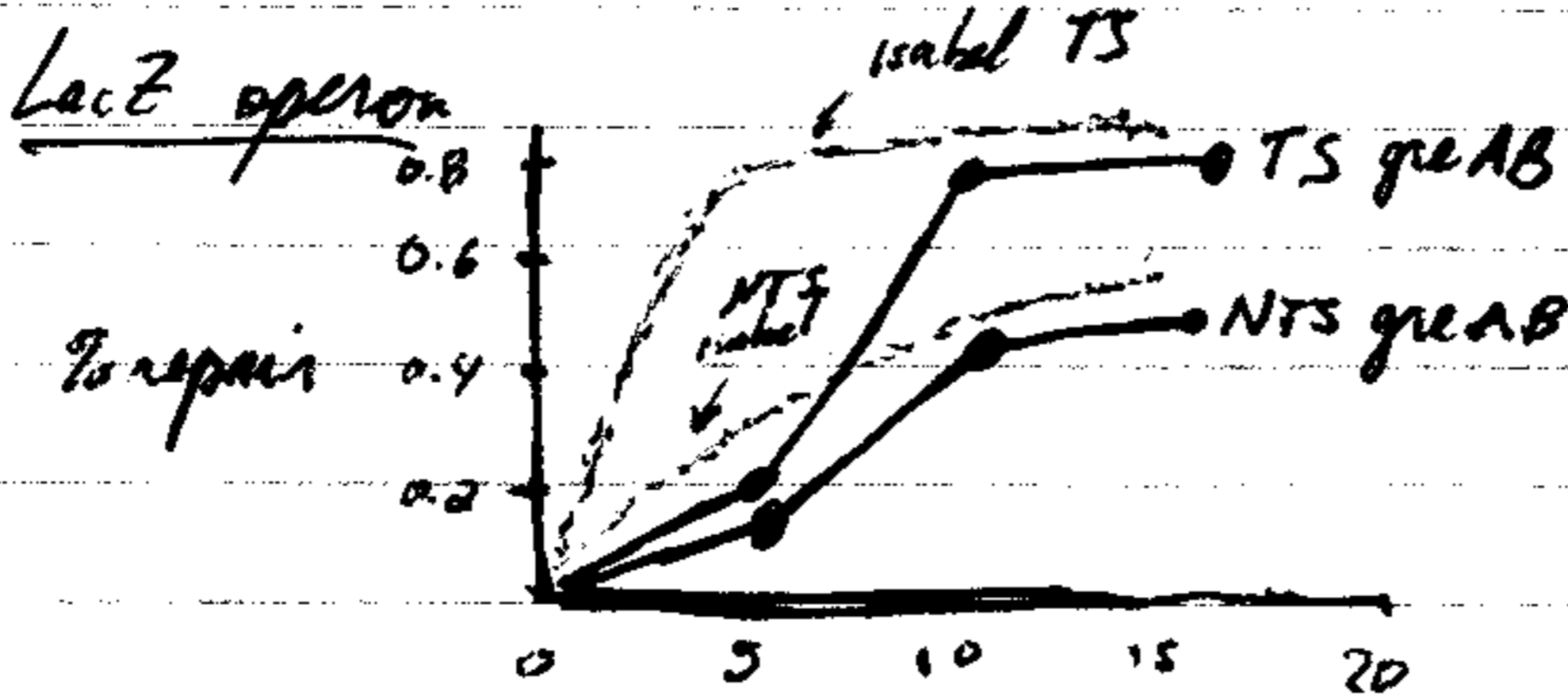
- greA & greB mutants
- involved in tx. backup at stalls

highly similar
at aa sequence

GreA
GreB

- induces removal of 2-3 nt fragments from 3' end
- acts only on chaseable complex
- seems to prevent arrest
- xtal structure
- bends 3' end of transcript
- induces removal of 9-10 bp fragments from 5' end
- can rescue after tx. arrest

Double, single mutants + isogenic wt



Sensitivity of MFD

↳ TO CORRECT FOR SLIGHT DIFFERENCES IN LOADING VARIATION
OK

DAVID K - ANTIBODIES
6-4 Antibody HAD LESS STOP

