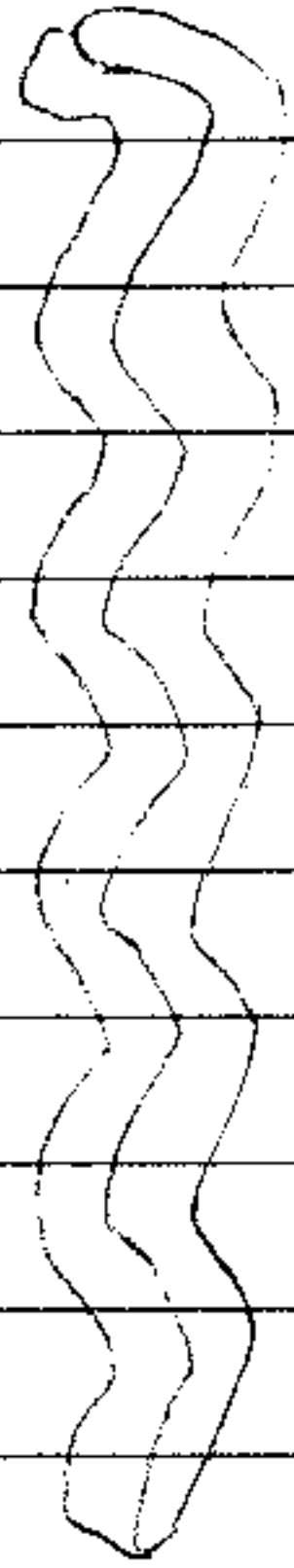
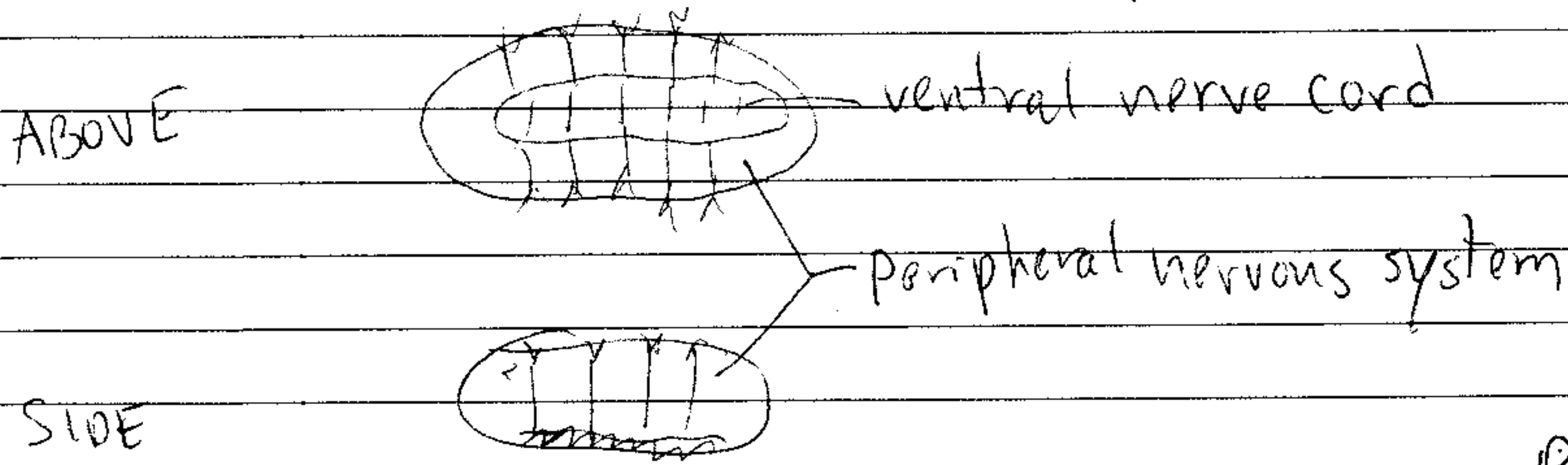


HLH Proteins & Drosophila Neurogenesis

Neuronal Cell Fates - Embryos

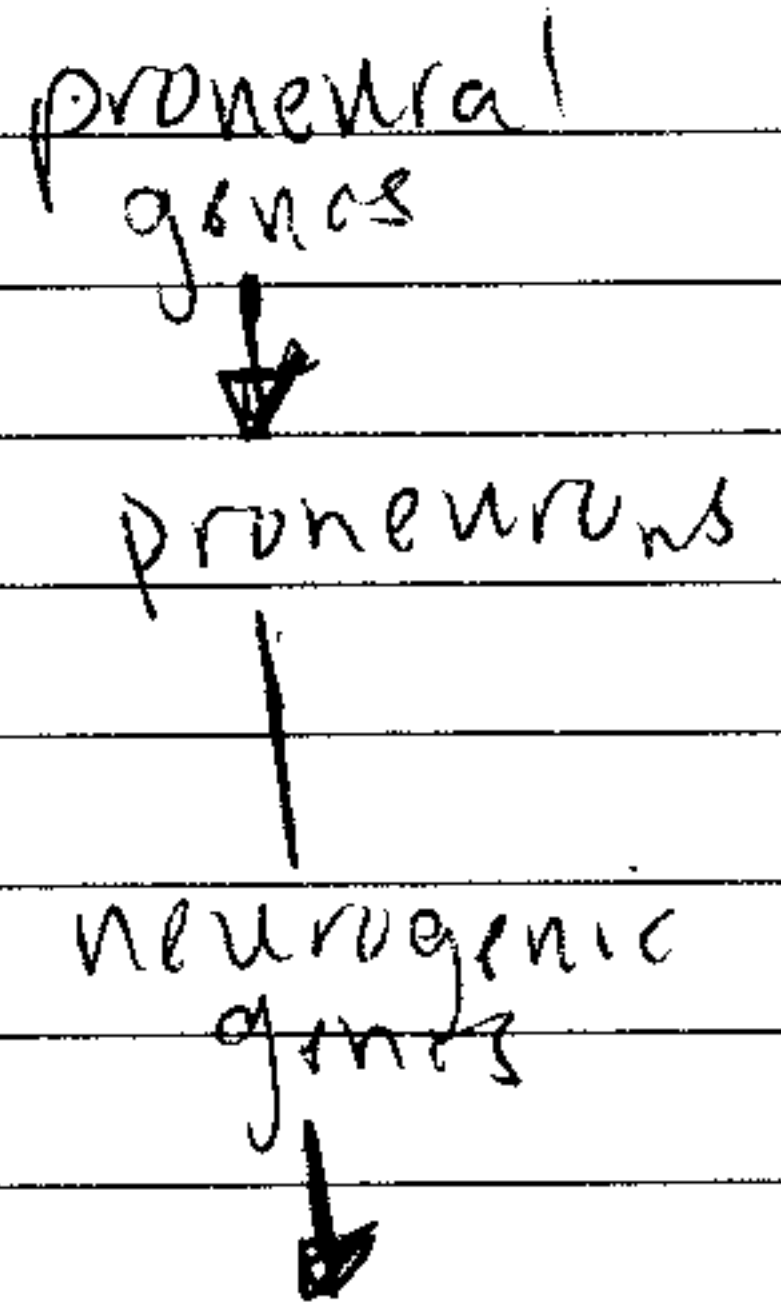


Neuroblasts → CNS

Sensory Organ Precursor → PNS

3 Genes

- Atonal
- Numb
- Oversensitive



Achaete-Scute Complex (AS-C)

- expressed in clusters
- loss of f(x) → loss of sense organs
- ectopic expression → ectopic sense organs
- required for 2/4 types of sense organs
 - external sense organs
 - multiple dendritic neurons
- not required for
 - chordotonal - hearing? (vibration)
 - photoreceptors - vision?

AS-C & daughterless

- tx factors
- regulate tx of ~~pro~~ neuronal genes

Degenerate PCR
↓

atonal

⚡

① - dimerizes with da, binds DNA

- is proneural gene for chordotonal
- also required for photoreceptor development

